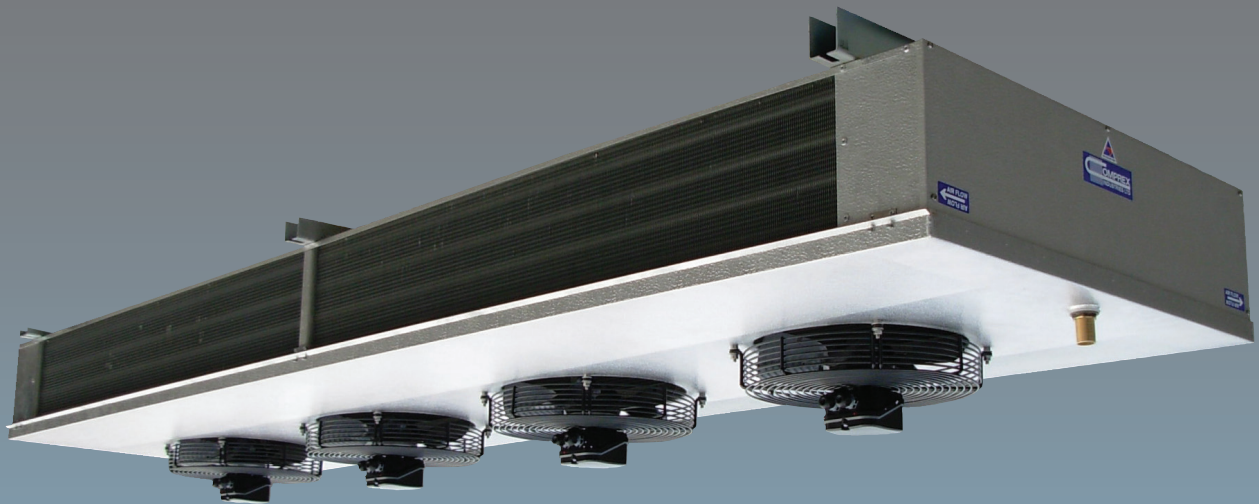





**“DF” Series
Forced Draught Unit Coolers
2 to 9.6 kw**




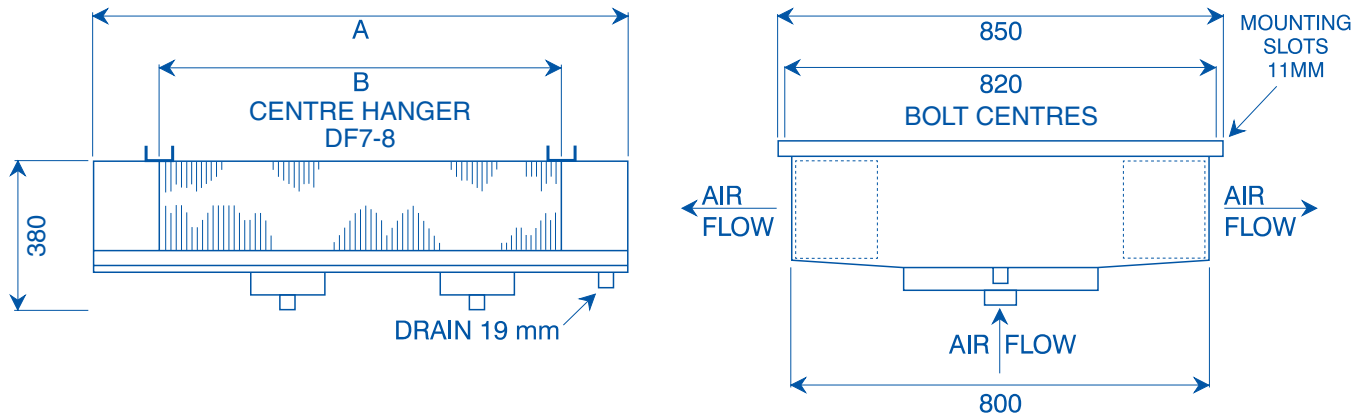
Traditional quality with new technology



TECHNICAL DATA "DF" SERIES FORCED DRAUGHT UNIT COOLERS

 MODEL: WATTS @ 6°C. TD SURFACE AREA m ²	3 MM FIN UNIT COOLERS (8 FINS/INCH)							
	DF1/3	DF2/3	DF3/3	DF4/3	DF5/3	DF6/3	DF7/3	DF8/3
	2,350	2,850	3,900	4,700	5,400	7,100	7,750	9,600
	16.7	22.3	27.8	33.4	39	50	55.4	67

 MODEL: WATTS @ 6°C. TD SURFACE AREA m ²	4 MM FIN UNIT COOLERS (6 FINS/INCH)							
	DF1/4	DF2/4	DF3/4	DF4/4	DF5/4	DF6/4	DF7/4	DF8/4
	2,010	2,350	3,300	4,020	4,500	6,000	6,600	8,200
	12.8	17	21.3	25.6	29.7	38.3	42.4	51



MODEL		DF1	DF2	DF3	DF4	DF5	DF6	DF7	DF8
FANS		1	1	2	2	2	3	3	4
AIR FLOW	L/S	425	440	800	850	875	1250	1350	1700
AIR THROW	M	6.0	6.0	7.0	7.0	7.5	7.5	7.5	7.5
FAN SIZE	MM	300	300	300	300	300	300	300	300
MOTOR AMPS, 230V, 1 PHASE		0.32	0.32	0.64	0.64	0.64	0.96	0.96	1.28
MOTOR WATTS		75	75	150	150	150	225	225	300
MOTOR HEAT 24 HRS	WATTS	1800	1800	3600	3600	3600	5400	5400	7200
PARTIAL DEFROST	WATTS	1160	1650	2000	2530	3000	3500	3910	5290
REFRIGERANT CHARGE	KG	1.2	1.6	2.0	2.4	2.8	3.3	3.9	4.4
SUCTION CONNECTION	MM	15.9	15.9	22.2	22.2	22.2	22.2	28.6	28.6
TEV CONNECTION	MM	12.7	12.7	12.7	12.7	12.7	12.7	12.7	12.7
EXTERNAL EQUALIZER	MM	6.4	6.4	6.4	6.4	6.4	6.4	6.4	6.4
WEIGHT	KG	18	25	30	33	40	48	54	64
LENGTH "A"	MM	730	880	1030	1180	1340	1640	1800	2100
LENGTH "B"	MM	470	620	770	920	1080	1380	1540	1840

Capacity based on R22 @ -4°C Evaporating, correction factors for various suction temperatures follows:

EVAP. TEMPERATURE °C	-40.00	-35.00	-30.00	-25.00	-20.00	-15.00	-10.00	-4.00	0.00	+5.00	+10.00
CAPACITY MULTIPLIER	0.82	0.84	0.87	0.90	0.92	0.95	0.98	1.00	1.03	1.06	1.09

ELECTRIC DEFROST: Models DF 1-7, 230 volt, single phase supply.
Model DF 8, 400 volt supply, partial defrost only.

WATER DEFROST MODELS: Increase height 70 mm, Drain 50 mm.

OPTIONS: 2 speed fans, Hot Gas Defrost, Discharge Grilles, Direction Louvres, Filters, Reheat Elements, TEV Fitted, Copper Fins, Alternative Circuitry, Passivated or Vinyl Coated Fins, Insulated Drain Trays, External System Pressure Fans, Alternative Fin Spacings.

Due to continuing development by Compex Industries Ltd, the information given in this brochure may be subject to modification without prior notice. Certified details may be supplied on request.

