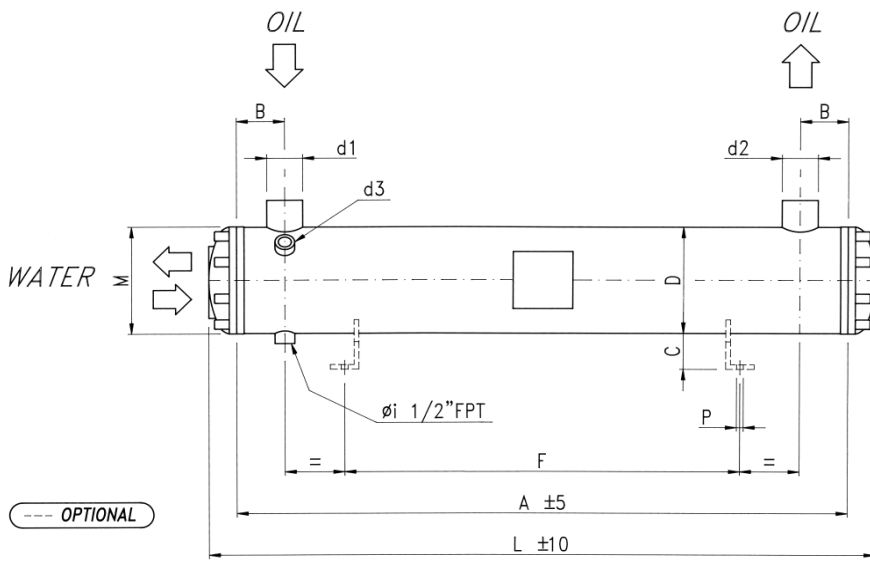


# ONDA

OIL COOLERS (WATER COOLED)

# OIL



**CE certified:**

Minimum design temp: -10 °C

Maximum design temp: +120 °C

Design press. on oil side: 30 bar

Design press. on water side: 10 bar

Copper tubes for standard version heat exchangers.

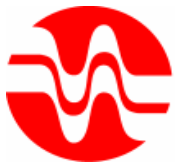
Carbon steel tubes available on request.

MODEL			OIL 29		OIL 57		OIL 86		OIL 120		OIL 180	
WORKING RANGE			min	max	min	max	min	max	min	max	min	max
WATER SIDE PASSES		No	8	4	8	4	8	4	4	2	4	2
OIL VOLUME		dm <sup>3</sup>	8.1		10.4		10.4		20		23.6	

DIMENSIONS	A	mm	800	800	800	1600	1600
	B	mm	100	100	100	100	100
	C	mm	56	56	66	56	56
	D	mm	141	168	194	168	194
	F	mm	400	400	400	1150	1150
	G	mm	160	160	220	160	220
	L	mm	910	910	910	1710	1710
	M	mm	170	170	195	170	195
	P	mm	12	12	12	12	12

OIL CONNECTIONS	d1	mm	øe 42.4	øe 42.4	øe 48.3	øe 60.3	øe 76.1
OIL CONNECTIONS	d2	mm	øe 42.4	øe 42.4	øe 48.3	øe 60.3	øe 76.1
OIL CONNECTIONS	d3	-	1/2" FPT	1/2" FPT	1/2" FPT	1/2" FPT	1/2" FPT
WATER CONNECTIONS	d4	-	G 3/4"	G 3/4"	G 1 1/4"	G 1"	G 1 1/2"
WATER CONNECTIONS	d5	-	G 1 1/4"	G 1 1/4"	1 1/2"	1 1/2"	G 2"

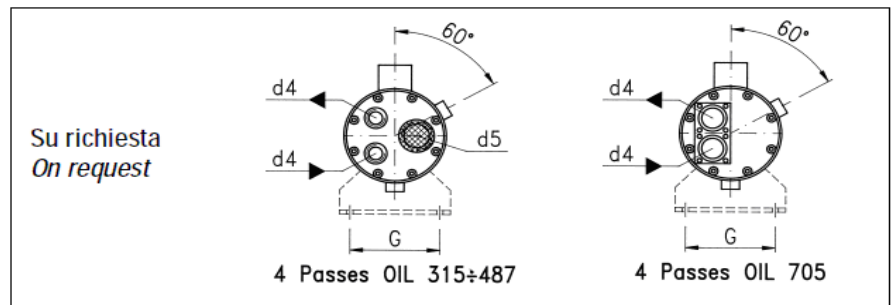
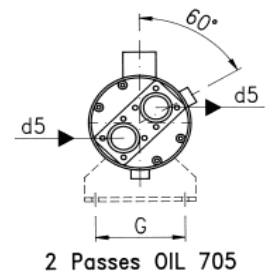
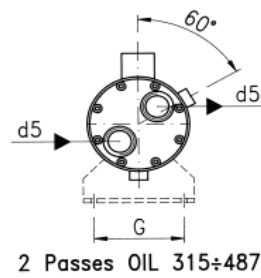
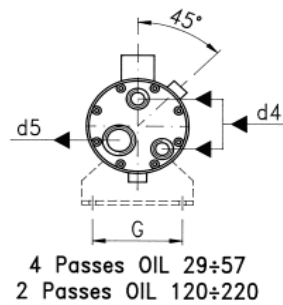
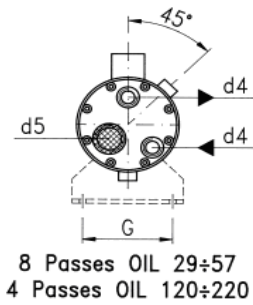
WEIGHT	-	kg	24	39	55	77	90
--------	---	----	----	----	----	----	----



# ONDA

## OIL COOLERS (WATER COOLED)

# OIL



MODEL			OIL 220		OIL 315		OIL 441		OIL 487		OIL 705	
WORKING RANGE			min	max	min	max	min	max	min	max	min	max
WATER SIDE PASSES		No	4	2	4	2	4	2	4	2	4	2
OIL VOLUME		dm <sup>3</sup>	22.2		53		43		66		89	

DIMENSIONS	A	mm	1600	1600	1600	2400	2400
	B	mm	100	150	150	150	150
	C	mm	66	85	85	85	94
	D	mm	194	273	273	273	324
	F	mm	1150	1150	1150	1700	1700
	G	mm	220	280	280	280	300
	L	mm	1710	1750	1750	2550	2570
	M	mm	195	275	275	275	325
	P	mm	12	14	14	14	16

OIL CONNECTIONS	d1	mm	øe 76.1	øe 88.9	øe 88.9	øe 114.3	øe 141.3
OIL CONNECTIONS	d2	mm	øe 76.1	øe 88.9	øe 88.9	øe 114.3	øe 141.3
OIL CONNECTIONS	d3	-	1/2" FPT	1" FPT	1" FPT	1" FPT	1" FPT
WATER CONNECTIONS	d4	-	G 1 1/2"	G 2 1/2"	G 2 1/2"	G 2 1/2"	DN 80
WATER CONNECTIONS	d5	-	G 2"	G 3"	G 3"	G 3"	DN 100

WEIGHT	-	kg	102	175	222	250	340
--------	---	----	-----	-----	-----	-----	-----